

1A Old Haymarket 73-89 Victoria Street, Liverpool, L1 6AF
Tel: 0151 305 2577
Email: liverpoolsales@ascendproperties.com
www.ascendproperties.com

Ascend

Built on higher standards



Parliament Place, Upper Parliament Street, Liverpool

£625 PCM

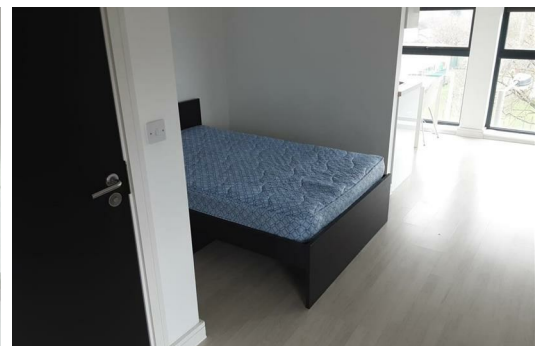
Ideal for students and young professionals, this fully furnished one-bedroom apartment has everything you need and is just a stone's throw from the University of Liverpool. Situated just outside the Georgian Quarter, and a few minutes outside of Toxteth, you have both the old historical and new up-and-coming areas to explore. With buses on your doorstep, it's a 15-minute journey into town, where you can no doubt make the most of Liverpool's fantastic shopping, music scene, and nightlife.

Available immediately, the apartment is generously proportioned with a double bed, bathroom with shower, desk perfect for studying, and a stylish compact kitchen complete with a dining space that can easily seat guests. With large floor to ceiling windows facing the entrance, the kitchen, and your desk, you have ample light where you need it the most. The bed, nicely secluded in the centre of the apartment with plenty of space either side, is comfortably tucked away allowing you to sleep in peace.

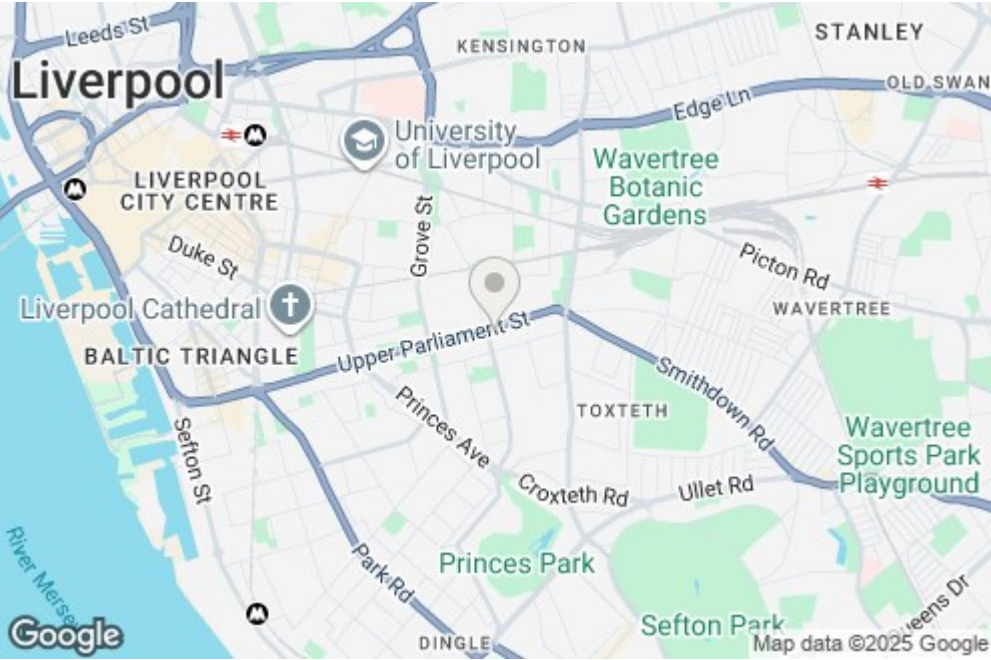
With its short distance to the university, neighbouring bus stops, and Edge Hill train station, you'll be well connected and ready to make the most of living in Liverpool. If you're interested in having a closer look, or have any questions, do get in touch.

Images may vary for marketing use only.

Available 17th December 2025
12 month tenancy
Deposit £720
Council Tax Band A



81 Parliament Place 248 Upper Parliament Street,, Liverpool, Merseyside, L8 7QE



Energy Efficiency Rating		Environmental Impact (CO ₂) Rating	
Very energy efficient - lower running costs	Score	Very environmentally friendly - lower CO ₂ emissions	Score
A	93	A	
B		B	
C		C	
D		D	
E		E	
F		F	
G		G	
Not energy efficient - higher running costs		Not environmentally friendly - higher CO ₂ emissions	